



The Kitchi Gammi Club

831 East Superior Street - Duluth, MN 55802 - 218-724-8589



Artistic vision, Goodhue's little friend

You've heard the story of how the historic Kitchi Gammi Clubhouse came to be. In 1910, the Club formed a building committee with Guilford Hartley as chairman. The committee paid \$42,000 for the land on the corner of 9th Street and Superior Avenue and selected Bertram Grosvenor as architect. The Clubhouse opened January 1, 1914.

However, there is a part of the story you may not know. Goodhue's story. Though it begins in England, it is an American original. One of the first examples of the American Dream.

In 1620, forebears on both sides of Goodhue's ancestry departed England in search of a new life. The ship in which they would arrive to the new world was called The Mayflower. His relatives settled throughout Massachusetts.

Goodhue's father, Charles Wells Goodhue, grew up in Vermont, while his mother Helen Grosvenor Eldredge, Pomfret, Connecticut.



A portrait of Kitchi Gammi Club Architect, Bertram Grosvenor Goodhue, looks on as members celebrate the opening of the pub named in his honor. The Goodhue Arms opens M-Sa at 4 p.m.

After their marriage Goodhue's parents moved to her hometown to live in a house built by the most notable member of her family, her grandfather, Colonel Thomas Grosvenor. He was a member of the Revolutionary Army and fought at Bunker Hill, Trenton and other notable battles. This was to be the house in which Ber-

GOODHUE: Continued on Page 11.





Chef's Signature August Features

Panzanella Salad

Panzanella Salad 19
House made Croutons, Spinach, Heirloom Tomatoes, Feta Cheese, Cucumber, Red Onion and Avocado tossed in a Dill Vinaigrette

Ahi Tuna & Watermelon 22
Seared Ahi Tuna, Fresh Summer Watermelon, Avocado, Balsamic Reduction and Garlic Salt

Pork Belly 30
Crispy Slow Braised Pork Belly over a Poached Pear Barley Risotto with Sautéed Leeks and an Elderberry Gastrique

Messy Face Burger 20
Half Pound Burger on a Toasted Brioche Bun loaded with Fried Onions, Provolone Cheese, Smoked Bacon, Lettuce, Tomato, Mayo and Fermented Ketchup served with Truffle Fries

Surf & Turf 5oz. 44
Grilled Fillet Mignon and a 4oz Cold Water Lobster Tail with Roasted Candy Strip Beets, Fried Fennel and a Truffle Beurre Blanc

Chef
Matthew Bernstein

Set the Membership Table!

Throughout the Fall, we are placing a special focus on Kitchi Gammi Club membership. In the same way our service staff prepare intricate table settings for meals and events of all varieties, it is equally important for our members to organically create a setting which allows for a bountiful membership body for years to come. Your friends and colleagues are the integral pieces of flat, silver, or glassware who make up the future of our Club.

Once the table is set, it is our responsibility to fill these plates, bowls and glasses with the best food and beverages possible. Which is why, as a delicious incentive, Chef Matthew Bernstein has agreed to sweeten the pot. For each letter of referral submitted to the Membership Committee in September and October, he will place the name of the letter's writer into his giant kitchen pot. At the end of October, Chef will draw the winner of an exclusive Kitchi Gammi Club Chef's table experience. Watch the magic in the kitchen unfold as you dine with guests in an intimate and first-hand setting. Your reward for assisting in setting the table of membership from which we all benefit and share.



On Friday, September 9 (the first Friday after school starts) we will be hosting a signature event called Back to the Kitch. The intention of the family friendly festivities are to reintroduce members and their families to our Club after a busy summer. This is also a great opportunity for members to invite acquaintances who may be interested in joining our ranks as members, and to experience the Kitchi Gammi Club first hand. There will be a dunk tank, bouncy castle, live music, and plenty of treats for both kids and grown-ups alike. It is positive member and guest experiences at events like these which assist in setting and maintaining a lavish table for years to come.

Contact Paul Gregersen in our Membership Department with any questions or to submit a name for membership.

(218) 724-8589 membership@kitchigammiclub.com



Matthew Bernstein

Born and raised in Shakopee, Matthew moved to Duluth for College. After graduating from UMD he spent the next 8 years personal training, nutrition coaching and managing gyms in the area. Teaching people how to eat, what to eat and why to eat brought him back to his love of cooking. There were very few places in Duluth that had the caliber of culinary performance he was looking to immerse himself in. When he received an opportunity to start at the Kitchi Gammi Club, he jumped on it. Matt learned as much as he could from Chef John Martin in his five years here. Now he finds himself at the helm of a fantastic kitchen, in an amazing establishment with extraordinary opportunities ahead.

Chef Matthew prides himself in using only the best ingredients when it comes to serving Kitchi Gammi Club members. 1) Skirt Steak and potatoes from the Winter Wine Dinner. 2) Farm fresh Carrots used in daily operations. 3) Alaskan Halibut, Herb Risotto and Plumb Sauce. 4) Dill, Mint and Parsley straight from Chef's garden. The herbs have been used for grilling on the Terrace.



1)



2)



3)



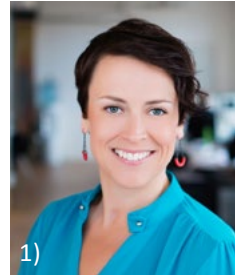
4)



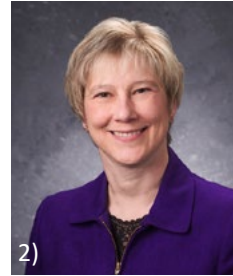
AIM HIGH NETWORK

CELEBRATE WOMEN IN LEADERSHIP!

This 'can't miss' Aim High Network gathering will host a panel of exemplary women leaders who will share their experience, philosophy, advice and leadership tools.



1)



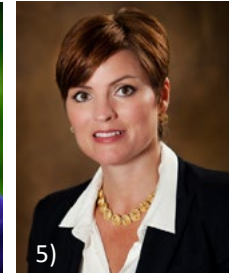
2)



3)



4)



5)

Panelists Include:

- 1) Elissa Hansen
Duluth City Councilor, co-owner Steam Creative Consulting
- 2) Jo Ann Hoag
Former St Luke's VP of Regional Development and President/CEO of Lake View Hospital
- 3) Emily Larson
City of Duluth's first female mayor
- 4) Dr. Kathleen Annette
President/CEO of the Blandin Foundation
- 5) Dr. Renée Wachter
Chancellor at the University of Wisconsin Superior



Thursday, September 29

5 p.m. Registration & Social
6 p.m. Panel Discussion
7-7:30 p.m. Networking

\$25 Inclusive for KGC Members **RSVP Required**
Hosted by KGC Member, Pam Solberg-Tapper

The Aim High Network connects inspiring women entrepreneurs and community leaders in Northeastern Minnesota and Northwestern Wisconsin to build influence, leadership, wealth and opportunity.

BACK TO THE KITCH!



1)

Kids (students fifteen and under), The first week of school can be rough. Unwind with a bouncy house, dunk tank, candy, games and more. No cost to you due to your high stress level these days. Parents, Back to School is cause to celebrate!

Parents, Back to School is cause to celebrate!

JOIN US, NO MATTER THE REASON.



Featuring the music of artist Colleen Myhre.



Friday, September 9 5:30-7:30 p.m.
\$50 inclusive for adults, kids are free
BBQ fare and fun for all ages!
RSVP Required - Open Seating - Guests Encouraged

Upcoming Club Events

Wine and Spirits Dinner
Thursday, August 25 7:00 p.m.

Back to the Kitch!
Friday, September 9 5:30 p.m.

A Jacobean Revival!
Annual Kitchi Gammi Club Foundation Dinner
Thursday, September 22 5:30 p.m.

Aim High Network:
Celebrate Women in Leadership!
Thursday, September 29 5 p.m.

Kitchi Gammi Club Annual Meeting
Tuesday, October 4 7 p.m.

30th Anniversary KGC Women's Celebration
Thursday, October 13 7 p.m.

Wine and Spirits Dinner
Thursday, November 3 5:30 p.m.

American Heritage Book Group of the Kitchi Gammi Club
Adams vs. Jefferson: The Tumultuous Election of 1800
By John Ferling
Tuesday, November 15 5:15 p.m.



1) Page 4, Mr. Charles Johnson's great nephew Morgan Schulte from St. Louis, Missouri and great niece Joslyn Heckman from Kansas City, Missouri celebrate Grandma's Marathon. Joslyn's mother ran the marathon. Both families stayed at the Kitch for several days and had a great time. 2) baby Jackson was born to staff member Kassie Conley this summer. Baby, Kassie and daddy, Seth, are doing well. 3) Mrs. Kris Teberg toasts the June Wine Dinner. 4) Grandma's marathon Bloody Mary's were selfie worthy. 5) Members celebrate the Summer Social. 6) Members and guests of all ages attended Grandma's Marathon at the Kitch. 7) The Lobster Boil was a hit again this year! 8) She said YES! Ms. Megan Colburn accepted the proposal of member Mr. Jason Johnson during Grandma's Marathon. Congratulations to the lovely couple from your Kitchi Gammi

GIANNI BUONOMO
wine dinner

presented by the KGC culinary,
wine and spirits committee

thursday, august 25

5:30 p.m. social 6 p.m. dinner

terrace dining, weather permitting
\$150 inclusive

rsvp desk@kitchigammiclub.com
(218) 724-8589

The winemaker will be in attendance,
presenting the wine.

Baja California, Mexico.

As an Enology student in Washington he interned at Don Carlo Vineyard in Milton-Freewater, Oregon, on the south side of the state line with Washington. Don Carlo is located on "The Rocks" of the Walla Walla Valley AVA. Tim Kennedy, the founder of Tim's Cascade Potato Chips, and his wife Lori replaced acres of cherry trees with grape vines. Keith was able to work in all facets of winery operations at this prototypical family run winery.

During his second year in Walla Walla, Keith apprenticed at the hot-shot winery Longshadows Vintners. Longshadows is a collective of seven top winemakers from around the world that was founded by former president and CEO



Keith Rolle, Gianni Buonomo Founder

of Chateau Ste. Michelle, Allen Shoup. At Longshadows this international group of vintners is able to showcase their artistry with the finest of Columbia Valley grapes. It was at Longshadows where he was able to rub shoulders and learn from some of the most highly regarded winemakers in the world.

Keith is a member of the Guild of Sommeliers, has passed his Level 1 sommelier exam and is currently preparing for the Certified Sommelier exam through the Court of Master Sommeliers. Keith speaks English, Spanish and French and is working on his Italian. He is Kitchi Gammi Club member, Phil Rolle's brother.



2012 BLAUFRÄNKISCH 2012 MAESTRALE 2013 BARBERA
2013 BLAUFRÄNKISCH 2013 MAESTRALE 2012 SANGIOVESE

**Kitchi Gammi Club Culinary,
Wine and Spirits update**



By: Jim Holton
Culinary, Wine and Spirits Co-Chairperson

Greetings Kitchi members from the Culinary, Wine & Spirits committee. With our beautiful, summer weather, the Club offers several great venues to enhance your dining experience. Especially make sure you get out on the Terrace and enjoy

the view.

Our recent Wine Dinners have been very well received and provide a sensational way for you to experience the best of what the club offers in culinary delights paired with unique, interesting wines.

These were the pairings from our recent June wine dinner:

Passed Appetizers

Yellow Watermelon, Cantaloupe, Prosciutto, Fennel
Paired with Wolfberger Brut Rosé- France

1st Course

Brioche Crouton, Parmesan Mousse, Anchovy, Endive
Paired with Picpoul De Pinet- France

2nd Course

Pork Roulade, Apple, Celery Root, Pickled Ramp
Paired with Montinore Estate Müller-Thurgau- Oregon

3rd Course

Fried Oysters, Roasted Cauliflower, Salmon Roe, Lobster Bisque
Paired with Barnard Griffin Rosé- Washington

4th Course

Beef Tartare, Béarnaise, Rye Crumb
Paired with Lefage Grenache- France

5th Course

Ahi Tuna, Fingerling Potato, Egg, Fava Bean, Kalamata Olive,
Radish

Paired with Steele Cab Franc Rose' - California

6th Course

Quail, Sunchoke, Fiddlehead Fern, Enoki Mushroom
Paired with Steele Cab Franc- California

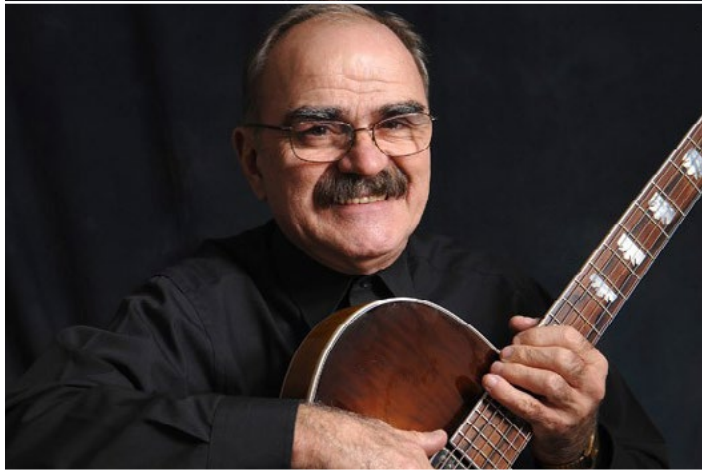
The next wine dinner is scheduled for Thursday, August 25th. Weather permitting we may dine and sample wines on the Terrace. Below, you will find a collage of photos from past dinners, to give you a better idea of what they are all about.

BREAKING NEWS – If you've stopped by the Goodhue Arms Pub, you already know it's a great place to sample your favorite beverage on the way home from work. We are pleased to announce we are now offering a limited number of Blueprint Bites to satisfy your hunger in the beautiful new pub.

Hoping you enjoy all the great amenities the Kitchi has to offer this Summer and Fall!



LIVE JAZZ GUITAR WITH BILLY BARNARD



Every Wednesday evening
from 6- 8 p.m. Includes half
priced bottles of house wine!

Reservations suggested



Blueberry Mojito

Signature Cocktail

By Jared Hegna
Food and Beverage Manager

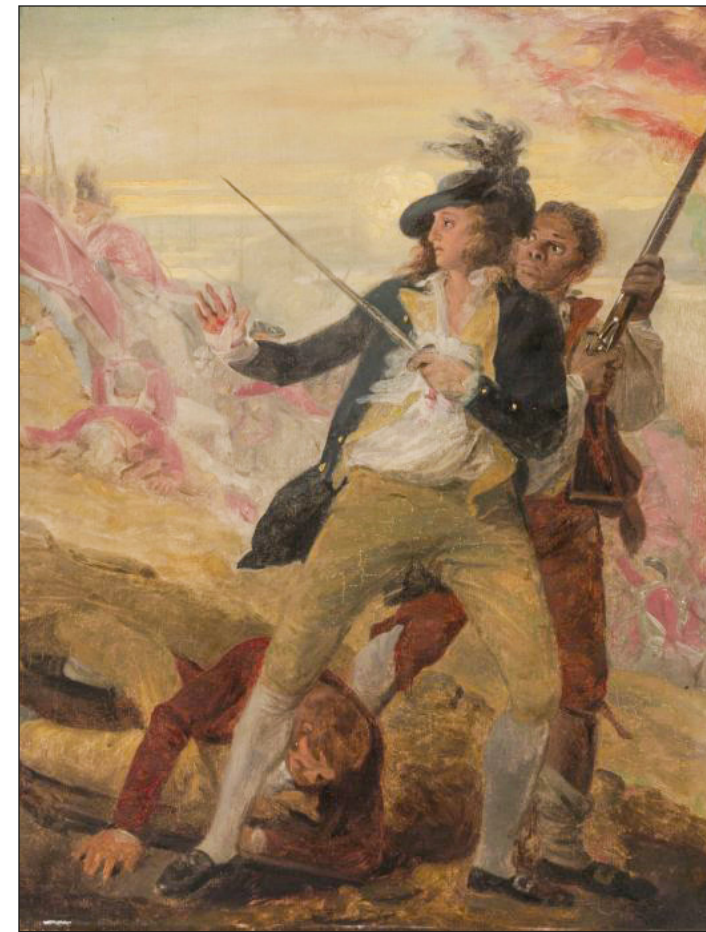
1.5 oz Bacardi Superior Rum .5 oz Rose's Lime .25 oz Simple Syrup Club Soda 8 Mint Leaves 2 Lime Wedges 8-10 Blueberries Fresh Ginger Ice.

Combine the blueberries, mint leaves, ginger (just a tiny taste), and a lime wedge in a cocktail glass, add the simple syrup and a splash of club soda and muddle. Fill the glass with ice, add the rum, and top with club soda and a dash of Rose's Lime. Finally, garnish with a mint sprig, fresh lime wedge, and a couple blueberries and enjoy at home or at the Kitch. Cheers!



It's never too early to plan for the holidays!
Banquet openings are available for your personal or business parties.

Keep your eyes peeled for Club sponsored holiday events the whole family will enjoy!



GOODHUE: Continued from Page 1.

tram Goodhue would be raised.

Born in Pomfret in 1869, Goodhue was home schooled by his mother until the age of 11. Although this was the case, Goodhue and his siblings weren't void of culture in their rural homestead. Goodhue's father was a lover of opera. The family often spent evenings around the piano with their mother playing as father and the children sang.

The arts were an important aspect of Goodhue's childhood and would go on to inspire him as an artist in adulthood. Goodhue enjoyed playing the guitar, piano and attended performances on stage frequently later in life. His brother, Harry, would also go on to become an artist as well.

Goodhue's mother was well educated. She attended Troy Female Seminary. Throughout her life, she took pride in collecting autographs in a book she received from Colonel Grosvenor. The book contained signatures of authors, artists, historians and politicians. The pages contained

names such as Dickens, Longfellow, Bancroft, Monroe, Quincy Adams and Grant. In her book, *Bertram Goodhue: His Life And Residential Architecture*, Goodhue biographer, Romy Wyllie, suggests that familiarity with such names as well as the connections his mother had for notable people,

prepared the way for Goodhue to feel comfortable with those men and women of importance he encountered while establishing himself as a professional in adulthood.

Due to financial restraints,

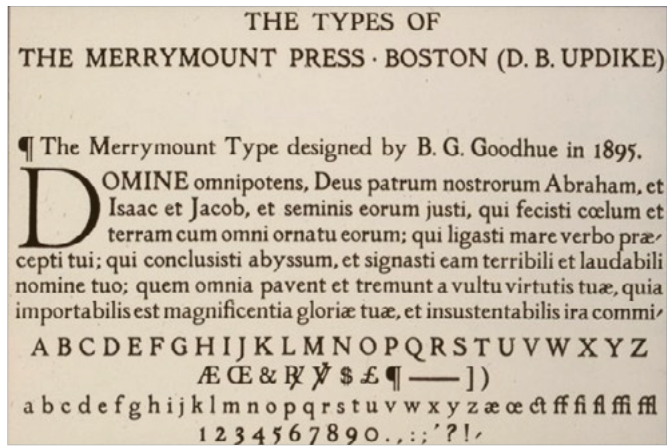
Goodhue was unable to attend a university. In lieu of formal training he moved to Manhattan, New York City in 1884 to apprentice at the architectural firm of Renwick, Aspinwall and Russell (one of its principals, James Renwick, Jr., designed

Grace Church and St. Patrick's Cathedral in both in New York City. Goodhue's apprenticeship ended in 1891 when he won a design competition for St. Matthew's Church in Dallas.

In 1896, Goodhue made the bold move of refocusing his work on the design of typefaces. He moved to



(Top left) Goodhue's grandfather, Colonel Thomas Grosvenor, as portrayed in the Painting "The Battle of Bunker's Hill" by John Trumbull. (Top right) Goodhue as a child with his mother, Helen. (Above) Goodhue as a young man living on the East Coast of the United States.



Goodhue's most notable typefaces are Merrymount (above) which was first featured in the 1892 Episcopal Book of Common Prayer (right). His second notable typeface, Cheltenham, has been used as the primary headline font in the New York Times since 1906 (lower right). Cheltenham variations have also been incorporated in the design of Goodhue Arms graphics and menus at the Kitchi Gammi Club.

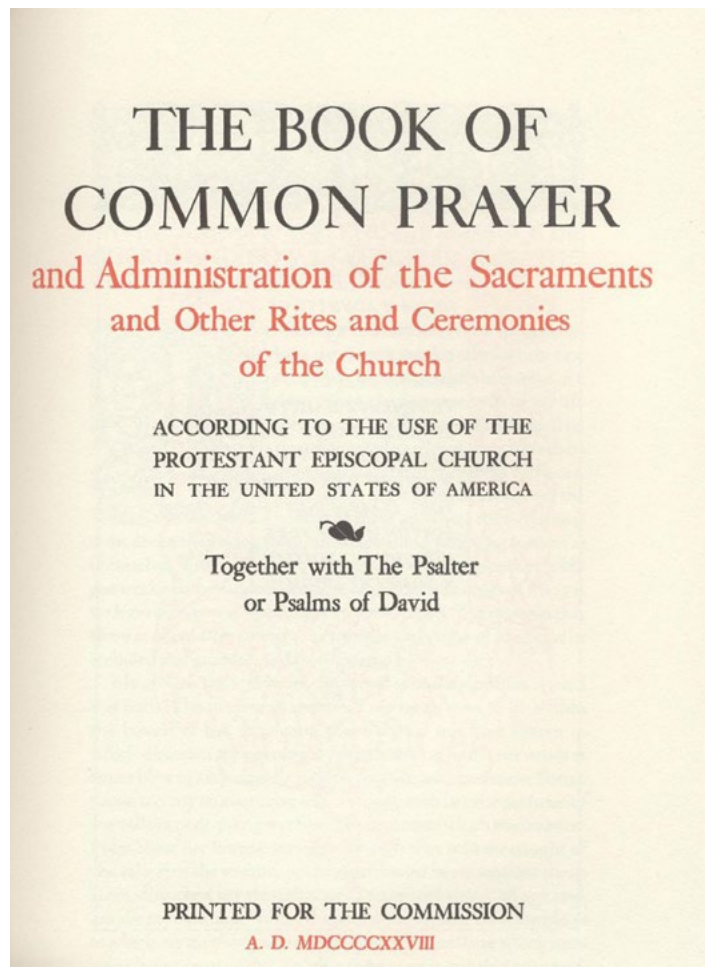
Boston as part of the Arts and Crafts movement in American book arts. He was befriended by a circle of artists which included Charles Eliot Norton of Harvard University and Ernest Fenolosa of the Boston Museum of Fine Arts. It was through this group that Goodhue met Ralph Adams Cram, who would be his business partner for almost 25 years.

Goodhue's first successful typeface design was Merrymount for the Merrymount Press, a scholarly printing company, founded and run by Daniel Berkeley Updike in Boston, Massachusetts. Merrymount Press was founded "to do common work uncommonly well. It catered uniquely to a limited, superior public which supported its efforts. As a result, it established a reputation for delivering only the very best obtainable typography, impression, illustrations, and binding.

Merrymount face is a medieval-looking, humanist typeface. It was first prominently displayed in the Episcopal Book of Common Prayer of 1892 and the official Episcopal Altar Book of 1896.

Following the success of Merrymount face, fellow printer Ingalls Kimball commissioned Goodhue to design a new typeface for the private use of his New York-based Cheltenham Press. Kimball sketched the basic weight while Goodhue completed the drawings, for what would become the namesake Cheltenham type-

GOODHUE: Continued on Page 14.



A Jacobean Revival!

To Benefit the Kitchi Gammi Club Foundation

Thursday, September 22
5:30 p.m. Social 6:30 p.m. Dinner

*Inspired by the Renaissance architecture of our historic Clubhouse.
Featuring a King James I feast with entertainment.*

THE LATIN NAME FOR JAMES IS JACOBUS. THE ENGLISH STYLE IN VOGUE BEGINNING WITH JAMES I'S REIGN IS REFERRED TO AS JACOBAN. IT FORMED A TRANSITION BETWEEN THE ELIZABETHAN (TUDOR) AND THE PURE RENAISSANCE STYLES OF ARCHITECTURE. IN THE EARLY 20TH CENTURY, THERE WAS AN AMERICAN JACOBAN REVIVAL IN ARCHITECTURE. INCLUDING, BERTRAM GOODHUE'S DESIGN OF THE KITCHI GAMMI CLUB'S PERMANENT RESIDENCE.

For a nominal price, you can assist in preserving our treasure of a Clubhouse, as part of this annual fundraising dinner. All donations are tax deductible.

RSVP (218) 724-8589 desk@kitchigammiclub.com
Period dress is encouraged but not required

The Kitchi Gammi Club Foundation is a not for profit 501(c)(3) corporation established to maintain the exterior of the Kitchi Gammi Club building. Donations to the KGC Foundation are tax deductible as a charitable contribution.

GOODHUE: Continued from Page 12.

face (or 'Chelt' as it was often referred to by American typesetters).

Cheltenham, enjoyed massive success in the early 1900s, largely due to the robust variety of widths and styles it offered, leading the typeface to be considered one of the most widely known in the United States. It was a favorite among newspapers, and was notably adopted as a headline typeface for The New York Times around 1906, used to this day.

In 1891, Cram and Goodhue formed the architectural firm of Cram, Wentworth, and Goodhue, renamed Cram, Goodhue and Ferguson in 1898. The firm was a leader in Neo-Gothic architecture, with significant commissions from ecclesiastical, academic, and institutional clients.

On January 29, 1889, Duluth's Kitchi Gammi Club lost its Clubhouse, located on the fourth floor of the Duluth Opera House, when it burned to the ground. A renovated house at 203 West Second Street was used by the Club until 1891 when the organization moved to the newly built Glencoe Building (Howe) at Third Avenue West and First Street. While residing in the leased Glencoe space, the Club established a Building Committee, with Guilford Graham Hartley as Chairman. Hartley included Edward Cogdon and Frederic Paine on the committee. Cogdon's parents had just completed building their home (Glensheen Mansion) in 1908 under the Jacobean Revival style of architecture. The style was



(Above) The drafting room at Cram, Goodhue and Ferguson. "I believe it makes for happiness that men's work should be interesting and not always mere work, like that of the men ruled by an 'efficiency' fanatic, therefore, it's perfectly well understood that anybody [under his employ] can look at books, smoke, talk, and sing-especially the latter. Often, going into the drafting room, I find myself in a perfect 'nest' of singing birds." -Bertram Goodhue

chosen by the committee as Hartley looked to the east, engaging Goodhue to design the new Clubhouse.

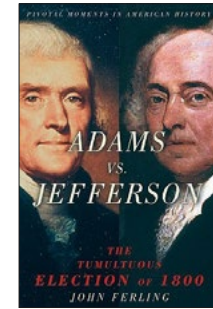
Goodhue's blueprints for the new Clubhouse featured an English look of brick and stone with



A copy of Goodhue's Kitchi Gammi Club's blueprints.

The American Heritage Book Group 2015-16: *Founding of Our American Heritage*

It was a contest of titans: John Adams and Thomas Jefferson, two heroes of the Revolutionary era, once intimate friends, now icy antagonists locked in a fierce battle for the future of the United States. The election of 1800 was a thunderous clash of a campaign that climaxed in a deadlock in the Electoral College and led to a crisis in which the young republic teetered on the edge of collapse.



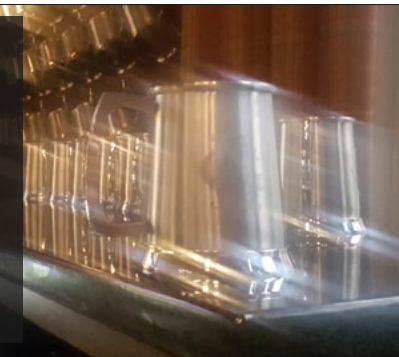
Adams vs. Jefferson: The Tumultuous Election of 1800 by John Ferling.



Tuesday, November 15
5:15 p.m. Social 6 p.m. Light Supper
\$22 inclusive - RSVP Required

Hosted By KGC members Brad Jenson & Tom Homan

Only one commemorative Kitchi Gammi Club Goodhue Arms Mug remains! It can be yours for a \$2,500 Pub Contributors Donation. Contact the Front Desk for details.



multi-light rectangular windows, bay windows, triangular gables above the roof line, steeply pitched roofs, tall chimneys and round arched doorways familiar with the Jacobian Revival style. Goodhue continued the English look in the interior with wooden beamed ceilings and chestnut wall paneling to complement the Arts and Crafts style fireplace facades, window seats and built-in cabinetry.

Shortly after the construction of the Kitchi Gammi Club, Goodhue left his firm to begin his own practice in 1914. Working independently, Goodhue departed into a series of radically different stylistic experiments. His first was the Byzantine Revival style for St. Bartholomew's Episcopal Church on New York City's Park Avenue, built on a new platform just above the Grand Central Terminal rail yards.

In California in 1915 Goodhue re-interpreted masterful Spanish Baroque and Spanish Colonial architecture complete with the latter's traditional Churrigueresque detailing into what became known as the Spanish Colonial Revival Style of architecture. This was for the significant



NOW AVAILABLE!

Blueprint Bites

Duck Fries 12

Crispy French Fries, tossed in Truffle Oil and Parmesan, topped with Confit Duck

Meat & Cheese Board 14

Assorted Cheeses and Charcuterie, accompanied by Stone Ground Mustard, and French Bread

Calamari 14

Lightly seasoned Fried Squid served with a Sweet Chili Sauce

'London Inn' Onion Rings 10

Original recipe, hand battered Onion Rings, deep fried to perfection and served with Blue Cheese dressing

Smoked Salmon Spread 14

A creamy spread of Smoked Salmon, Capers and Cream Cheese, served with warm, crispy Pita Bread and Whiskey Pickled Red Peppers

The Pub opens at 4 p.m. M-Sa



(Top) The original Kitchi Gammi Club blueprints designed by Goodhue.
 (Above) Goodhue's grandson, Nicholas Goodhue visits the Kitchi Gammi Club in 2006.

commission of the El Prado Quadrangle's layout and buildings at the major 1915 Panama-California Exposition, located in San Diego's Balboa Park. He was the lead architect, taking over from Irving Gill, with Carleton Winslow Sr. and Frank Lloyd Wright assisting.

The Panama-California Exposition's style was seen by many and widely published, becoming extremely influential in California and the Southern and Southwestern United States. It led to California's assimilation of Spanish Colonial Revival Style architecture as its dominant historical, regional style, which continues to this day. The singular style for the rebuilding of San-

ta Barbara after its 1925 destruction by a major earthquake was drawn from the local Mission Revival and Goodhue's Panama-California Exposition Spanish Colonial Revival style trends.

Examples of influential private Californian commissions, both registered landmarks now, are his 1906 J. Waldron Gillespie Estate El Fureidis and 1915 Dater-Wright Ludington Estate Dias Felices — Val Verde in Monticello. Goodhue and Gillespie had done a six-month research

and acquisitions tour together through Egypt, Persia, and the Arabian Peninsula before collaborating on the classic Persian garden layout and Roman and Spanish Colonial Revival residence at El Fureidis in Monticello, California. The front exterior of El Fureidis is most notably recognized today in pop culture as the house used in the 1983 film Scarface, starring Al Pacino.

Goodhue's Spanish Colonial Revival style work went on to dominate the Hawaiian architecture of public buildings and estate residences during the 1920s.

Later Goodhue's architectural creations became freed of architectural detail and more Romanesque in form, although he remained dedicated to the integration of sculpture, mosaic work, and color in his surface architectural details. Towards the end of his career, he arrived at a highly personal style, a synthesis of simplified form and a generalized archaic quality, and those innovations paved the way for others to transition to modern architectural idioms. This style is seen in his last major projects: the 1926 Mediterranean revival and Egyptian revival Los Angeles Public Library; the Nebraska State Capitol; and in his 1922 entry for the Chicago Tribune Tower competition.

Goodhue died in 1924, at the age of 54. His colleague Donn Barber wrote in the magazine *Architectural Record* that "bright promises of the greater things he might have done must go unfulfilled."

Notable Works by Goodhue

- All Saints' Church, Ashmont, Massachusetts, 1892
- Public Library, Nashua, New Hampshire, 1902
- Grace Church Chapel, Chicago, Illinois, 1904
- The Chapel and the original campus of the United States Military Academy, West Point, New York, 1906
- El Fureidis in Monticello, California, 1906
- Saint Thomas Church in New York City, 1906
- First Baptist Church, Pittsburgh, Pennsylvania, 1909
- St. John's Episcopal Church (West Hartford, Connecticut), 1909
- St. Paul's Episcopal Church, Duluth, Minnesota, 1912
- Church of the Intercession, New York, 1913
- St. Bartholomew's Church, New York City, 1913
- Hotel Washington, Colón, Panama, 1913
- Ford Hall, Rutgers University, 1914
- Hartley Office Building, Duluth, Minnesota, 1914
- Virginia Military Institute, Lexington, Virginia, 1914
- Hartley House, Duluth, Minnesota, 1915
- Rockefeller Chapel, University of Chicago, Chicago, Illinois, commissioned 1918, built 1925–1928
- Los Angeles Central Library, Downtown Los Angeles, California, 1924
- Nebraska State Capitol, Lincoln, Nebraska, 1924

(Right) Although he never underwent any formal architectural training at a university, Goodhue did receive an honorary degree from Trinity College in 1911. At which time, this photograph was taken. It is the same portrait of Goodhue which hangs in the Goodhue Arms at the Kitchi Gammi Club. (Below) El Fureidis, a residence designed by Goodhue in Monticello, California. The exterior set the scene for Al Pacino's character of Tony Montana in the film Scarface.



Front Desk (218) 724-8589
desk@kitchigammiclub.com
kitchigammiclub.com

Richard Gaylord
General Manager
manager@kitchigammiclub.com

Paul Gregersen
Membership & Marketing Director
membership@kitchigammiclub.com

Jared Hegna
Food & Beverage Manager
foodandbeverage@kitchigammiclub.com

Matt Bernstein
Chef
chef@kitchigammiclub.com

Accounting Office
accounting@kitchigammiclub.com

Banquets and Catering
eventsmanager@kitchigammiclub.com

Mitchell Ringness
Newsletter Photography



The Kitchi Gammi Club
831 East Superior Street
Duluth, MN 55802-2211



Welcome to legendary hospitality at the Kitchi Gammi Club, your home away from home.



**Thank you to the Kitchi Gammi Club Foundation
for your continued, marathon of support!**

The Kitchi Gammi Club Foundation, a separate entity from the Kitchi Gammi Club, has supported the efforts of maintaining our historic and beautiful Club-house property since 2000. This Spring, the foundation provided over \$12,000 for a new front sidewalk. It was completed just in time for Grandma's Marathon and has been enjoyed by all since its installation. To contribute to the Kitchi Gammi Club Foundation, please contact Mr. Charles Johnson or the KGC Front Desk.

